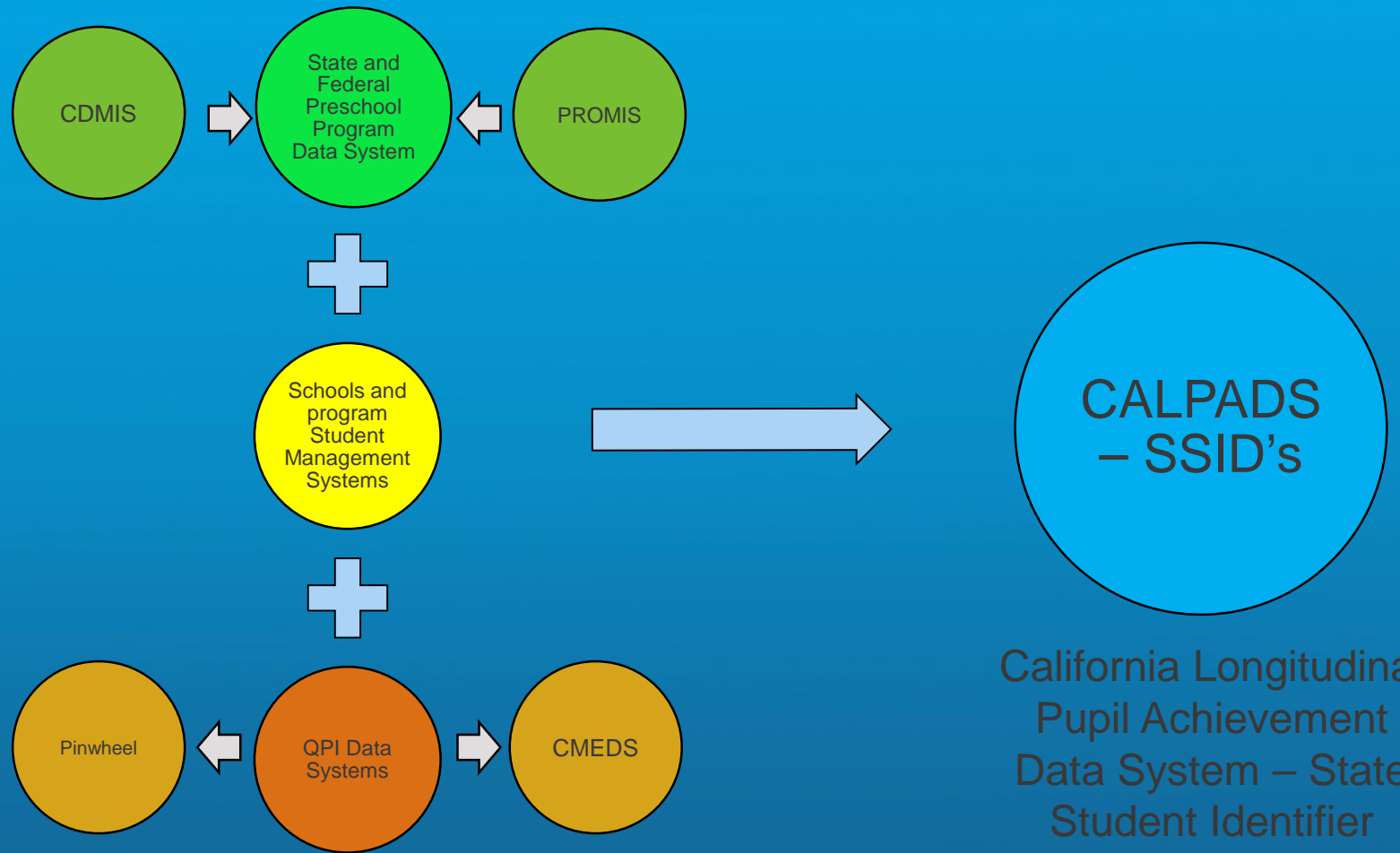


A Successful Approach to Connecting Early Childhood and Elementary School Data

Juan Carlos Torres & Lucia Garay

January 16, 2020

Early Childhood and School Data Systems



Formalizing the Intent to Align Systems

Legal Agreements

- 2012-13 meetings between First 5 Executive Director and the San Diego Superintendent of Schools
- Legal advisement
- Finalization of the Data Sharing Agreement template between SDCOE and school Districts

School District Recruitment and Engagement

- Districts that operate State Preschools and Head Start programs AND participating in QPI
- Districts that operate preschool programs NOT participating in QPI
- Districts that do not operate preschool programs

San Diego County School Districts Data Sharing Agreements

Fully Participating

- Cajon Valley Union School District
- La Mesa-Spring Valley School District
- San Ysidro School District
- South Bay Union School District
- Vista Unified School District

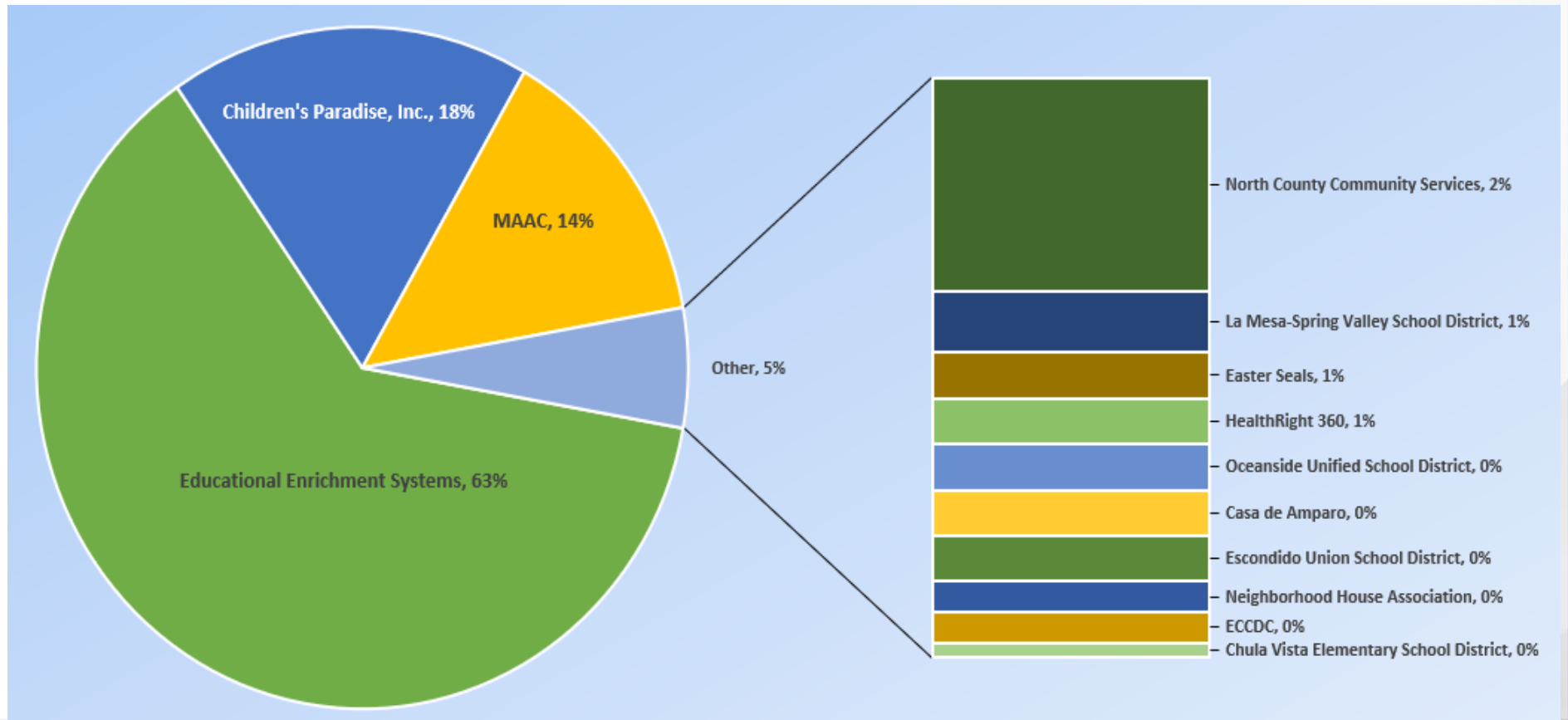
Gradual Adopters

- Borrego Unified School District
- Fallbrook Union Elementary District
- Jamul-Dulzura Union School District
- Lakeside Union School District
- Mountain Empire Unified School District
- Vallecitos School District
- Warner Unified School District

Vista Unified School District Kindergarten Intake

2017-18 Quality Preschool Initiative Student Matriculation (663 Students)

QPI Agency Name	Student Count
Educational Enrichment Systems	419
Children's Paradise, Inc.	120
MAAC	93
North County Community Services	14
La Mesa-Spring Valley School District	4
Easter Seals	3
HealthRight 360	3
Oceanside Unified School District	3
Casa de Amparo	3
Escondido Union School District	3
Neighborhood House Association	2
ECCDC	2
Chula Vista Elementary School District	1
Grand Total	670



Vista Unified School District Enrollment

Quality Preschool Initiative Student Concentration by Grade (2,758 Students)

Vista Unified School District Enrollment	Total	Grade K	Grade 1	Grade 2	Grade 3
Vista Unified	24198	8.30%	7.20%	7.10%	7.00%
Vista Unified (K-3rd) Students	7163	2008	1742	1718	1694

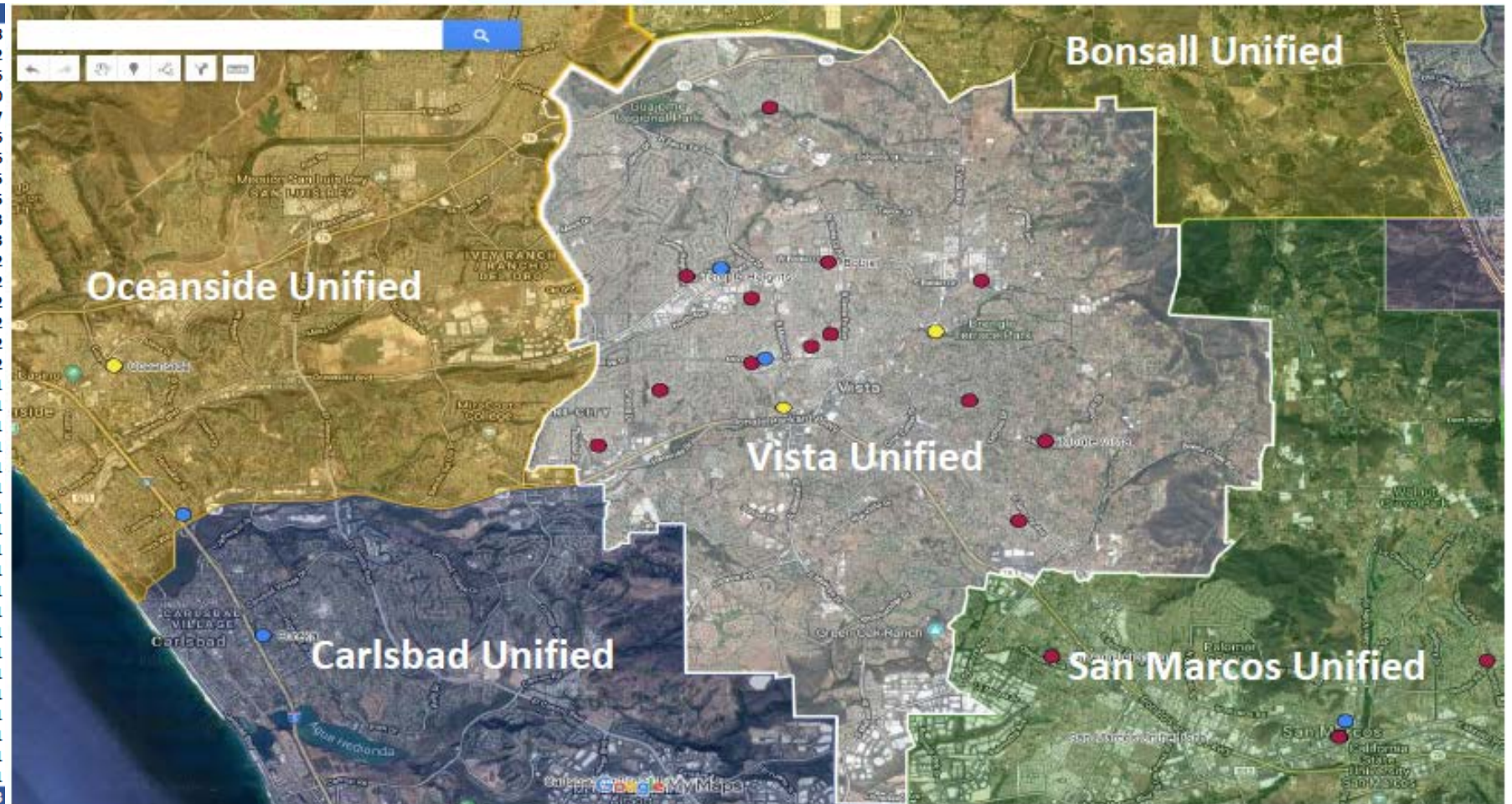
QPI Enrollment at Vista Unified	Total	Grade K	Grade 1	Grade 2	Grade 3
QPI Total Percentage		33.06%	39.55%	37.83%	44.57%
QPI Total (K-3rd) Students	2758	664	689	650	755

Vista Unified Elementary Schools	Total	Grade K	QPI #	QPI %	Grade 1	QPI #	QPI %	Grade 2	QPI #	QPI %	Grade 3	QPI #	QPI %
Bobier Elementary	659	139	64	46.03%	112	56	49.99%	105	55	52.49%	109	81	74.49%
Beaumont Elementary	560	114	38	33.26%	90	42	46.58%	102	50	49.06%	89	66	74.12%
Vista Academy of Visual and Performing Arts	611	98	51	52.17%	102	51	49.98%	97	49	50.44%	99	67	67.69%
Maryland Elementary	644	108	67	61.93%	106	67	63.05%	114	50	43.86%	116	78	67.29%
Foothill Oak Elementary	584	88	41	46.49%	104	62	59.64%	92	46	49.85%	90	60	66.71%
Grapevine Elementary	797	179	77	42.94%	111	75	67.70%	134	62	46.30%	122	62	50.84%
Monte Vista Elementary	510	97	22	22.70%	89	32	35.85%	83	34	40.90%	84	41	48.72%
Hannalei Elementary	556	109	34	31.20%	79	42	53.20%	89	34	38.22%	93	43	46.31%
Casita Center for Science/Math/Technology	588	96	24	25.04%	96	28	29.21%	96	29	30.26%	96	35	36.52%
Mission Meadows Elementary	544	92	26	28.28%	96	32	33.42%	86	33	38.39%	100	33	32.97%
Breeze Hill Elementary	811	163	30	18.40%	151	40	26.52%	133	48	36.09%	126	36	28.64%
Empresa Elementary	848	157	18	11.47%	141	14	9.95%	147	24	16.36%	142	30	21.18%
Alamosa Park Elementary	489	101	15	14.82%	89	10	11.24%	94	12	12.78%	71	12	16.92%
Lake Elementary	787	150	18	11.97%	124	15	12.06%	118	13	11.01%	132	12	9.08%
T.H.E Leadership Academy	683	128	44	34.45%	121	41	33.91%	108	2	1.85%	93	3	3.23%
Bella Mente Montessori Academy	662	132	0	0.00%	86	0	0.00%	80	0	0.00%	76	0	0.00%
Guajome Learning Center	79	7	0	0.00%	2	0	0.00%	2	0	0.00%	2	0	0.00%
Guajome Park Academy Charter	1,416	45	0	0.00%	45	0	0.00%	48	0	0.00%	48	0	0.00%

Vista Unified School District Kindergarten Intake

2017-18 Quality Preschool Initiative Student Matriculation (663 Students)

Reporting LEA	Student Count
Vista Unified-3768452	438
Oceanside Unified-3773569	32
San Marcos Unified-3773791	16
Bella Mente Montessori Academy-0128223	10
National University Academy Dual Language Institute-0	7
Escondido Union-3768098	6
Guajome Park Academy Charter-3730942	6
Carlsbad Unified-3773551	5
SBE - Vista Springs Charter-3777156	5
SBC - High Tech High-3776471	3
Bonsall Unified-3776851	3
Romoland Elementary-3367231	2
Desert Sands Unified-3367058	2
San Diego Unified-3768338	2
Fallbrook Union Elementary-3768114	2
Santee-3768361	2
SBE - Baypoint Preparatory Academy San Diego-377717	2
Lemon Grove-3768205	1
Poway Unified-3768296	1
Darnall Charter-6039457	1
Los Angeles Unified-1964733	1
Ramona City Unified-3768304	1
Menifee Union Elementary-3367116	1
San Bernardino City Unified-3667876	1
Modesto City Elementary-5071167	1
San Francisco Unified-3868478	1
Delano Union Elementary-1563404	1
Santa Ana Unified-3066670	1
Temecula Valley Unified-3375192	1
Dimensions Collaborative-0137752	1
Chino Valley Unified-3667678	1
Community Montessori-0137695	1
Pittsburg Unified-0761788	1
Valley Center-Pauma Unified-3775614	1
Cajon Valley Union-3767991	1
Chula Vista Elementary-3768023	1
Pathways Charter-6120588	1
Grand Total	563



Research Study

- QRIS rating Validity

Stanford | GRADUATE SCHOOL OF
EDUCATION

- Longitudinal study

Stanford | GRADUATE SCHOOL OF
EDUCATION